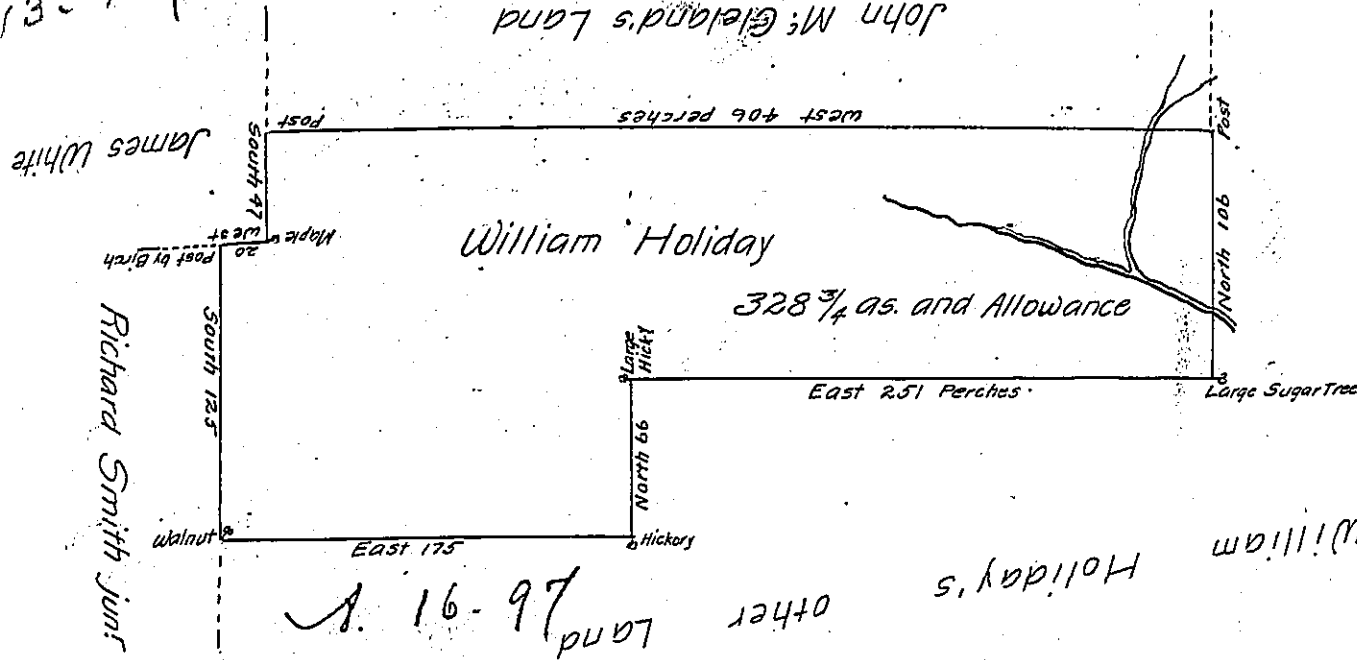


D. 13-467

Nov. 17

John McClelland's Land



A Draught of a Tract of Land called Holidays Choice situate
 on Waters of Clearfield Creek near half a Mile South from the
 Chest Meadoblt) adjoining Land of John McClelland James White
 Richard Smith(j) junior & William Holidays other Land in the County
 of Bedford Containing three hundred & twenty eight Acres & three
 Quarters of an (ac.) and the usual Allowance of six p Cent for Roads
 &c. Surveyed the 14th. Day of September 1773 for William Holiday in
 pursuance of Warrant Dated the 23d. Day of July in the same
 year,

by Thomas Smith D.S.

To John Lukens Esqr. }
 Surveyor General &c. }

Examined the field Notes & Draft of the above and ^{them} ~~it~~ to be Accurate.

October 30th. 1795

John Canan D.S.

Daniel Brodhead Esquire S.G.

IN TESTIMONY that the above is a copy of the original remaining on file in
 the Department of Internal Affairs of Pennsylvania, made
 conformably to an Act of Assembly approved the 16th day of
 February, 1833, I have hereunto set my Hand and caused
 the Seal of said Department to be affixed at Harrisburg,
 this eighth day of February 1905

Grace R. Brown
 Secretary of Internal Affairs